

INSTALLATION INSTRUCTIONS: **Organic ACOUSTIC Panels**

IMPORTANT USER INFORMATION

:: Muratto Organic ACOUSTIC Panels are intended for indoor use in normal ambient temperature and humidity conditions and must not be exposed to open flames or hot lighting fixtures;

:: Muratto Organic ACOUSTIC Panels are intended to be permanently attached to permanent wall structures only as described in these instructions;

:: Acoustic Panels needs to acclimate to site conditions prior to the start of the installation process. Though we recommend a default time of 72 hours, acclimating is not a function of time, but rather balancing of the moisture content of the material to the installation environment. Sometimes this takes longer, but it is critical that equilibrium is met or excessive expansion and/or contraction can occur.

Acclimating involves opening the packs of cork so that the tiles have access to air on all sides, so they achieve an equalized moisture/humidity level as the conditioned environment into which it will be installed (ie: HVAC running and operable). If the cork is not acclimated prior to installation, either gapping or expansion can occur. **Please Note: Shrinkage and/or expansion is not considered a manufacturing defect.**

:: Rough handling can easily damage panels and degrade the products' acoustic properties;

:: Clean Muratto Organic ACOUSTIC Panels only with mild soapy water. If it is necessary to use a commercial cleaner to remove a difficult stain, use a pH balance (neutral) cleaner, and test in a hidden area to ensure that there is no negative effect/reaction of the cleaner to the product surface. Improper cleaning is not considered a warrantable condition. Should you have any questions on cleaning, please inquire with your distributor and/or supplier.

:: Never use excessive amounts of water or liquid cleaners on Muratto Organic ACOUSTIC Panels, as with any natural material, it can absorb liquids and require extended time to dry would could lead to mold and mildew growth.

DIMENSIONS AND PACKAGING

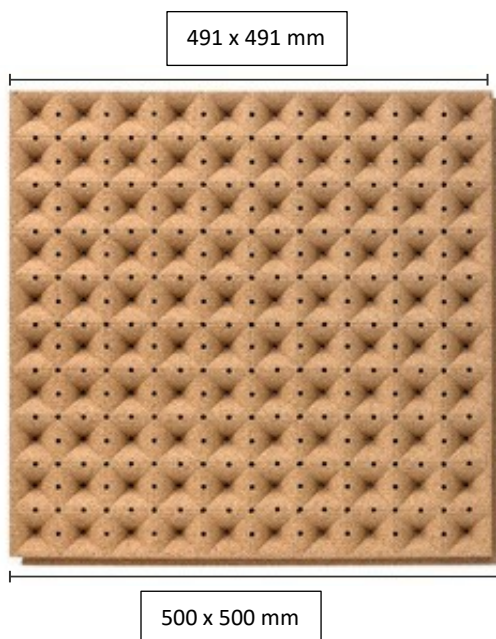
:: UNDERTONE

SURFACE SIZE 491 X 491 mm (19²/₆₄in x 19²/₆₄in)

TOTAL PLANK SIZE 500 x 500 mm (196²⁷/₃₂in x 196²⁷/₃₂in)

THICKNESS 30 mm (1³/₁₆in)

PACKED 4 panels per box



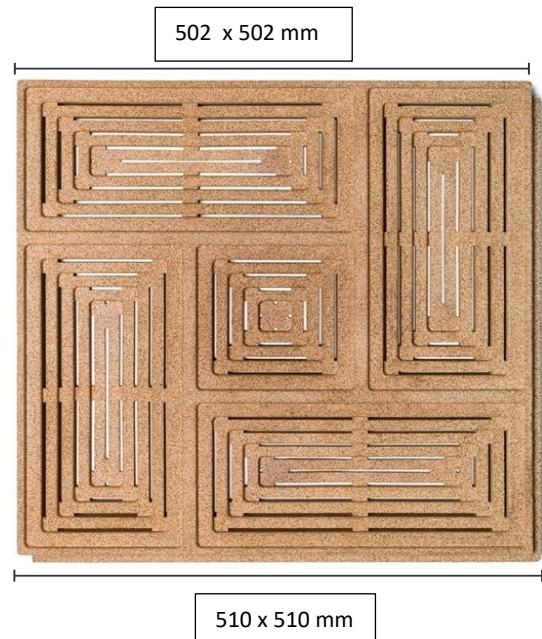
:: BUZZER

SURFACE SIZE 502 X 502 mm (19⁴⁹/₆₄in x 19⁴⁹/₆₄in)

TOTAL PLANK SIZE 500 x 500 mm (200²⁵/₃₂in x 200²⁵/₃₂in)

THICKNESS 30 mm (1³/₁₆in)

PACKED 4 panels per box



INSTALLATION INSTRUCTIONS: **Organic ACOUSTIC Panels**

REQUIRED TOOLS

:: Drill



:: Drill Bit



:: Cordless Screwdriver



:: Cutting Machine



:: Pencil



:: Tape Rule



:: Fixing Screws



:: Wallplugs



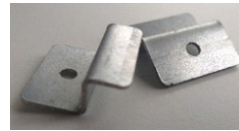
:: Wood strips /
membrane fastening rails



:: Level Tool



:: Muratto Clips



:: Acoustic



BEFORE INSTALLING MURATTO Organic ACOUSTIC Panels

Substrate:

The substrate to which the Organic ACOUSTIC Panels is installed, must be structurally sound, flat, clean and free of voids, dry, and be protected either with a paint or primer. If any of these characteristics are not met, it is imperative to fix them prior to the installation.

Acclimation:

Organic ACOUSTIC Panels are a natural product, so the tiles move with changes in temperature and relative humidity (ie: expand when facing high relative humidity conditions, and/or shrink in low relative humidity conditions). To minimize inherent movement, packaged tiles should be acclimated on site for at least 72 hours before installation – and, this must be done at on-going and operable HVAC conditions (those that will be maintained at consistent temperature and Relative

Humidity conditions on an on-going basis. Note: as with other natural materials, do not install in a non-conditioned space (ie: wherein the HVAC is not operable); and later turn on the HVAC system (– as temperature and humidity changes can cause excessive product movement. Acclimation is achieved by opening the boxes of the Organic ACOUSTIC Panels, removing the panels, and allowing air to flow between the individual pieces (in the climatized space the material will be installed within).

INSTALLATION INSTRUCTIONS: **Organic ACOUSTIC Panels**

INSTALLATION PROCEDURES

Step 1

Installing the Organic ACOUSTIC Panels requires careful planning and layout prior to the beginning of the installation process. Measure your wall horizontally and vertically to determine the number of panels you will use as well as the number of wood strips (for fastening the panels to) that will be needed for the installation process.

Step 2

Cut the fastening rails to the length and set aside. Each rail should be 45mm (or approx. 1-3/4") wide and have a depth/thickness of 70mm (or approx. 2.75").

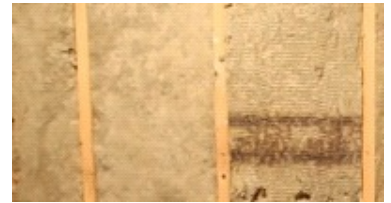
Install the fastening rails (either structurally sound wood or metal strips) with a distance of 25 cm (9-7/8") on-center (ie: the distance between the center of one fastening rail to the center of the next adjacent center fastening rail). Align the rails using a level; Note: (it's important to ensure all fastening rails are installed completely vertically so the panels align and are level).



To install the fastening rails, drill the fastening rails every 60 cm (or approx. 23-5/8") to 70 cm (27-9/16"), vertically up and down along the strips through its' depth/thickness (ie: 70mm face). Though you can level out minor irregularities on the wall by using spacers or shims, we do recommend the wall is level and flat prior to the beginning of the installation process. If the fastening rails are not pre-drilled into a structural substrate (wood, steel, or concrete), install the applicable anchor (drywall or concrete), and then a fix the fastening rails with suitable screws. Note: it is often best practice to apply adhesive along the length of the fastening rail prior to fixing the strips to the wall (to reinforce the bond). You should always use a starting and finishing wood strip close to the wall corner, independently from the others.

Step 3

Once the fastening rails are in place and mounted to the substrate, Rockwool AFB acoustic batting is to be installed in between the fastening rails. We recommend 1.5" thick Rockwool Cavity rock. Each package is 186 sq. ft. (16 Panels per package) Each piece is 24" wide by 48" long. Please contact us for pricing. NRC testing data is based on Rockwool panels as the backer but cotton provides similar results. Cut the acoustic material to tightly fit in between the rails. Adhere the acoustic material to the backwall cavity in between the rails, either with a suitable construction adhesive, or via fastening to the sidewalls of the rails. Note: allowing an air gap between the acoustic substrate material and the Organic Blocks Acoustical Panel ensures optimal NRC values.



NOTE

The Organic ACOUSTIC Panels can be installed without using the acoustic batting or direct glue to substrate. In both instances there will be a noted decrease in sound absorption and NRC values. For installations without the acoustic material substrate (ie: install panels onto fastening rails), the NRC will decrease by approx. 0.1 (ie: to 0.6 – Undertone / 0.7 – Buzzer). In this application we would also recommend diminishing the thickness of the fastening strips to 40mm (or approx. 1.5"). When installing via the Direct Glue method (similar installation to the Organic Blocks – Design Series using the trowel adhesive Loba Wakol MS 262), the NRC results are roughly half the value as the method described here (rigid insulation and air gap between fastening rails).

INSTALLATION INSTRUCTIONS: **Organic ACOUSTIC Panels**

Step 4

Start the installation in the left end corner. The groove sides should be facing upwards and rightwards. The first panel should be placed directly in the corner of the wall.



Cutting Panels - the panels are easily cut with a circular or reciprocating saw using proper cutting blades. If the saw cannot cut through the entire panel thickness, use a knife, handsaw or other method to cut through the material.



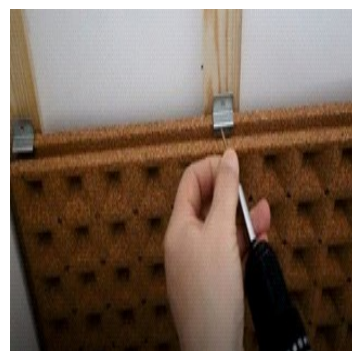
8

Install the panel with the groove side facing the top and right position, as it shows in the picture.



Step 5

Secure the first panel using the Muratto clips and the fixing screws on the horizontal groove side of the panel, as it shows in the picture. Each panel will be fixed with 2 Muratto clips (on the leftmost and center fastening rail).



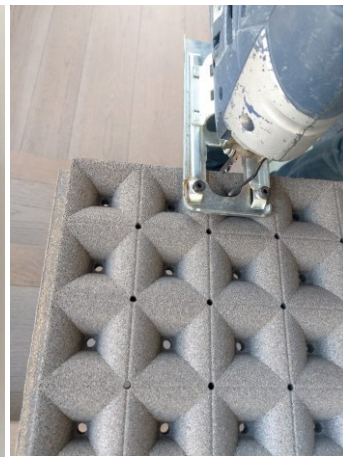
INSTALLATION INSTRUCTIONS: **Organic ACOUSTIC Panels**

Step 6

Place a bead of adhesive (recommendation Loba Wakol MS 262) in the groove prior to interlocking the panel on the right in the same row. Then secure it using the Muratto clips. Continue with the other panels until you reach the end of the row.



If you do not end on a full piece, cut off the last panel of carefully measure to ensure all panels line up and the edge the row as it is shown in the picture, making sure to detail is as planned.



FINAL NOTE

You can also install the panels directly into the wall without using the fastening rails. In this application you should be sure that the wall is completely flat and that adequate glue is used. This type of installation may result in a lower NRC than the ones described in our standard installation method.

INSTALLATION INSTRUCTIONS: **Organic ACOUSTIC Panels**

GENERAL

The information in these installation instructions is meant to provide guidance to the installer on installing the Organic ACOUSTIC Panels. Under no circumstance will Muratto or its' distributors be liable for installation issues and/or costs (whether direct, indirect, special, incidental, or consequential damages resulting from the use or guidance provided herein). These guidelines are not intended to cover all possible conditions and situations that might occur. The end user must exercise caution and common sense when assembling or installing Muratto products. Should you have any questions, please contact your supplier and/or the distributor for help and/or additional information.

For additional questions you may contact Sustainable Materials through:

info@sustainablematerials.com

(720)- 449-3063