

Sustainable Materials

# Wall Finishes

Muratto + Versacork + Textura



# Sustainable Materials



Sustainable Materials, by design and through its business model, helps develop and bring cutting edge European design and innovation to the North American decor market. We achieve this by leveraging our deep manufacturing partnerships throughout Europe.

With a focus on sustainability (raw material inputs and low toxicity), product development revolves around creating better products. Even an environmental skeptic would use them because of their excellent technical and design merits. We have then achieved our goal. And sustainability is inherent. We believe in creating better products for a brighter and more sustainable future.

Having won numerous 'global' design awards and accolades, Sustainable Materials' products grace walls, ceilings, and shelves of leading corporations the world over. From Hospitality and Healthcare, to Store and Office design, to the 'retail' channel and OEM production, the marriage of our manufacturing capabilities with a deep product development and design skillset prove an invaluable asset to our partners. We are focused, nimble, and able, and deliver on our clients' expectations, whether standard in nature, or customized based on specific needs.


Please look through this brochure, and supplement that by navigating through our website to see our current and complete product offering. Also, please our sister company brands/products:

**Décor Acoustics** ([www.DecorAcoustics.com](http://www.DecorAcoustics.com)) – specializing in 'acoustic' products

- CoreBOO™ - bamboo acoustic panels, planks, and slat walls
- WAVE™ Panels – moulded 'wave' panels from recycled PET felt
- Acoustifoam™ - closed-cell foam ceiling panels, baffles, and tiles

**Sustainable Flooring** ([www.SustainableFlooring.com](http://www.SustainableFlooring.com)) – specializing in 'sustainable' flooring

- Densacore™ – bamboo on mineral substrate
- ComCORK™ – commercially viable cork flooring
- Hightech™ Woods flooring – super-densified, wide-plank, engineered flooring

 Pete Nichols, President

## Muratto

---

### Organic Blocks

*Cork Strips* 8

*Design Blocks* 10

*Acoustic Panels* 11

**Cork Bricks** 16

**Cork Bark Panels** 22

**Primecork** 28

**Concrete Overlay Panels** 32

## Versacork

---

### Textura

---

**Recycled** 44

**Fusion** 48

**GROOVE** 52



# Muratto®

**Muratto®** is one of the most recognized and respected natural surface brands in Portugal. An effective cooperative, focusing on bringing sustainable innovations in wall and surface decor to market, Muratto has proven its worth since its inception in 2013. Its unique products have resulted in enthusiastic consumers around the world. Muratto has four directives in its approach to product development: Natural Lifestyle, Design, Sharing, and Comfort.



## NATURAL LIFESTYLE

Muratto bases its processes and innovations on sustainable design. Whether working with natural raw materials or designing a product around a material's inherent technical attributes, the natural element of raw material selection drives Muratto's design innovations.



## DESIGN

Good design is evident in everything that comes from Muratto. Leveraging cultural and historical design elements from around the globe, Muratto benefits from the input of its network of international designers. Muratto then develops manufacturing methods to bring these visions to reality, engaging its skilled multigenerational Portuguese craftsmen and women. Bringing the spectrum of international design together with the handiwork of skilled artisans has helped define Muratto's identity and resulted in global Design Awards and accolades.



## SHARING

Sharing is an integral part of Muratto's mission. With an historic background based on the Portuguese tradition of sharing, whether a meal with family or spending time to embrace one's surrounding with others, Muratto believes in bringing this tradition full circle. Looking beyond their immediate reach into an online presence, Muratto engages partners and clients in almost 50 countries. Shared discussions and feedback are integrated into all aspects of its operations.



## INTERIOR COMFORT

Comfort and what that means for a building's occupants is a focus in their design. Each product developed is endowed with features that enhance the daily life of its user. Inspirational visual impact, acoustic sound mitigation and ambient comfort are key elements in all of Muratto's innovations. Regardless of how one uses their individual senses to find interior comfort, Muratto is continuously working on product development in ways that contribute to this goal.



Cutting Cork



Stacks of harvested cork



Cellular structure

muratto®

# Organic Blocks™

a color-infused, densified, and molded cork surface treatment that provides sound absorption while offering a visually customizable 3-dimensional décor element. Each shape and pattern is available in 18 standard colors.



Cork Strips – Zig Zag – Red + Taupe



Design Blocks – Hexagon – Multicolored

 customizable

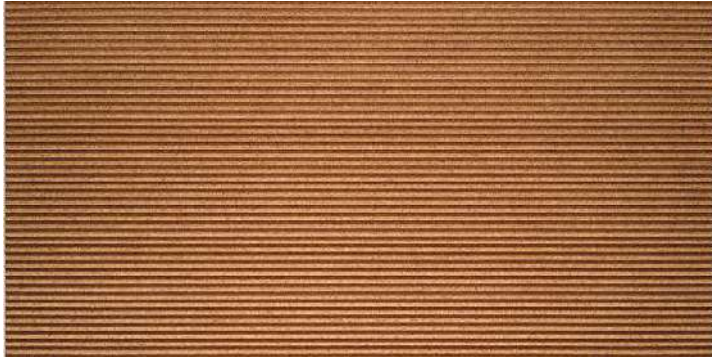


Acoustic Panels – Buzzer – Olive + Grey

 recycled + rapidly renewable

# Cork Strips

are larger format, lower relief panels that excel in larger installation areas where understated décor elements are of greater importance than striking visual artistic designs.



### Infinity

690\*390\*7mm/pc  
~(27 1/6" x 15 1/3" x 5/16")  
10 pcs / box  
~(29.6 sqft / box)

*\* see website for Infinity pattern inserts: Cross, Flow, and Sphere*



### Zigzag

702\*398\*7mm/pc  
~(27 5/8" x 15 5/8" x 5/16")  
10 pcs / box  
~(30 sqft / box)



### Wave

507\*504\*7mm/pc  
~(20" x 19 7/8" x 5/16")  
10 pcs / box  
~(27.5 sqft / box)

### Step

707\*487\*12mm/pc ~ (27 7/8" x 19 1/6" x 1/2")  
10 pcs / box ~ (37 sqft / box)



**Noise Reduction Coefficient:** 0.30  
(absorbs ~50% of human voice frequency)

### Geometric

634\*400\*7mm/pc ~ (25" x 15 3/4" x 5/16")  
10 pcs / box ~ (27.3 sqft / box)



**Fire-rating:** Class A (in 'sprinkled assemblies; Class B is standard)  
**Installation:** Direct glue

### Color Options



# Design Blocks

is the flagship line within the Organic Blocks that presents itself in high-relief, molded, geometric shapes that either are installed in a single color or can be intermixed for a more customized full wall or 'artistic feature' installation.



### Chock

250\*250\*24mm/pc  
~(9 7/8" x 9 7/8" x 1")  
16 pcs / box  
~(10.76 sqft / box)



### Minichock

250\*250\*24mm/pc  
~(9 7/8" x 9 7/8" x 1")  
16 pcs / box  
~(10.76 sqft / box)



### Peak

250\*250\*24mm/pc  
~(9 7/8" x 9 7/8" x 1")  
16 pcs / box  
~(10.76 sqft / box)



### Beehive

250\*180\*22mm/pc  
~(9 7/8" x 7 1/8" x 7/8")  
16 pcs / box  
~(7.75 sqft / box)



### Senses

250\*160\*45mm/pc  
~(9 7/8" x 6 1/4" x 1 3/4")  
15 pcs / box  
~(4.68 sqft / box)



### Hexagon

220\*190\*30mm/pc  
~(8 2/3" x 7 1/2" x 1 2/5")  
22 pcs / box  
~(7.41 sqft / box)



### Drop

224.2\*150\*34.4mm/pc  
~(8 7/8" x 5 7/8" x 1 1/3")  
15 pcs / box  
~(3.63 sqft / box)



### Kubus

141.8\*141.5\*88.6mm / pc  
~(5-5/8" x 5-5/8" x 3-1/2")  
24 pcs / box  
~(3.31 sq.ft. / box)

**Noise Reduction Coefficient:** 0.30 NRC (absorbs ~50% of human voice frequency)  
**Fire-rating:** Class A (in 'sprinkled assemblies; Class B is standard)  
**Installation:** Direct glue

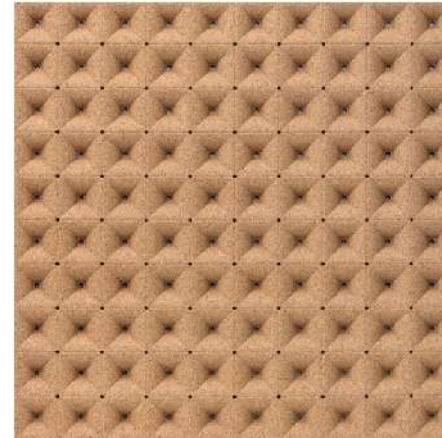
## Color Options



Natural Yellow Red Olive Turquoise Taupe Grey Ivory Copper Bordeaux Emerald Blue Aubergine Black Sarge Sand Grape

# Acoustic Panels

are designed to provide very high levels of acoustic absorption using a contemporary aesthetic that embraces shadowing elements which add greater transitional 'depth' to the designs.



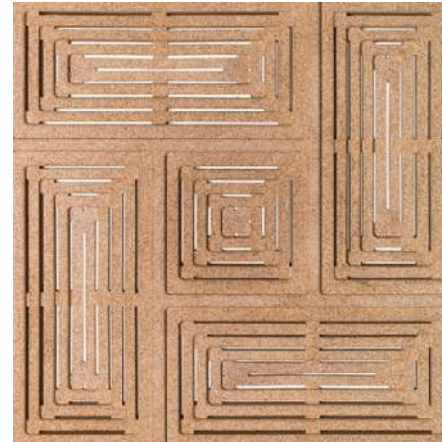
### Undertone

500\*500\*29mm/pc ~ (19 5/8" x 19 5/8" x 1")  
4 pcs / box  
~(10.76 sqft / box)

**Noise Reduction Coefficient:** 0.70  
(installing w/ 'sleeper' system;  
0.60 – as direct glue)

**Fire-rating:** Class A (in 'sprinkled assemblies; Class B is standard)

**Installation:** 'sleeper' system or direct glue



### Buzzer

500\*500\*29mm/pc ~ (19 5/8" x 19 5/8" x 1")  
4 pcs / box  
~(10.76 sqft / box)

**Noise Reduction Coefficient:** 0.80  
(installing w/ 'sleeper' system;  
0.70 – as direct glue)

**Fire-rating:** Class A (in 'sprinkled assemblies; Class B is standard)

**Installation:** 'sleeper' system or direct glue



*Undertone – Multicolored*



*Beehive - Natural*



*Wave – Ivory (installation layout #2)*



*Minichock – Black*



*Step - Olive*



*Infinity - Blue*



*Geometric - Yellow*



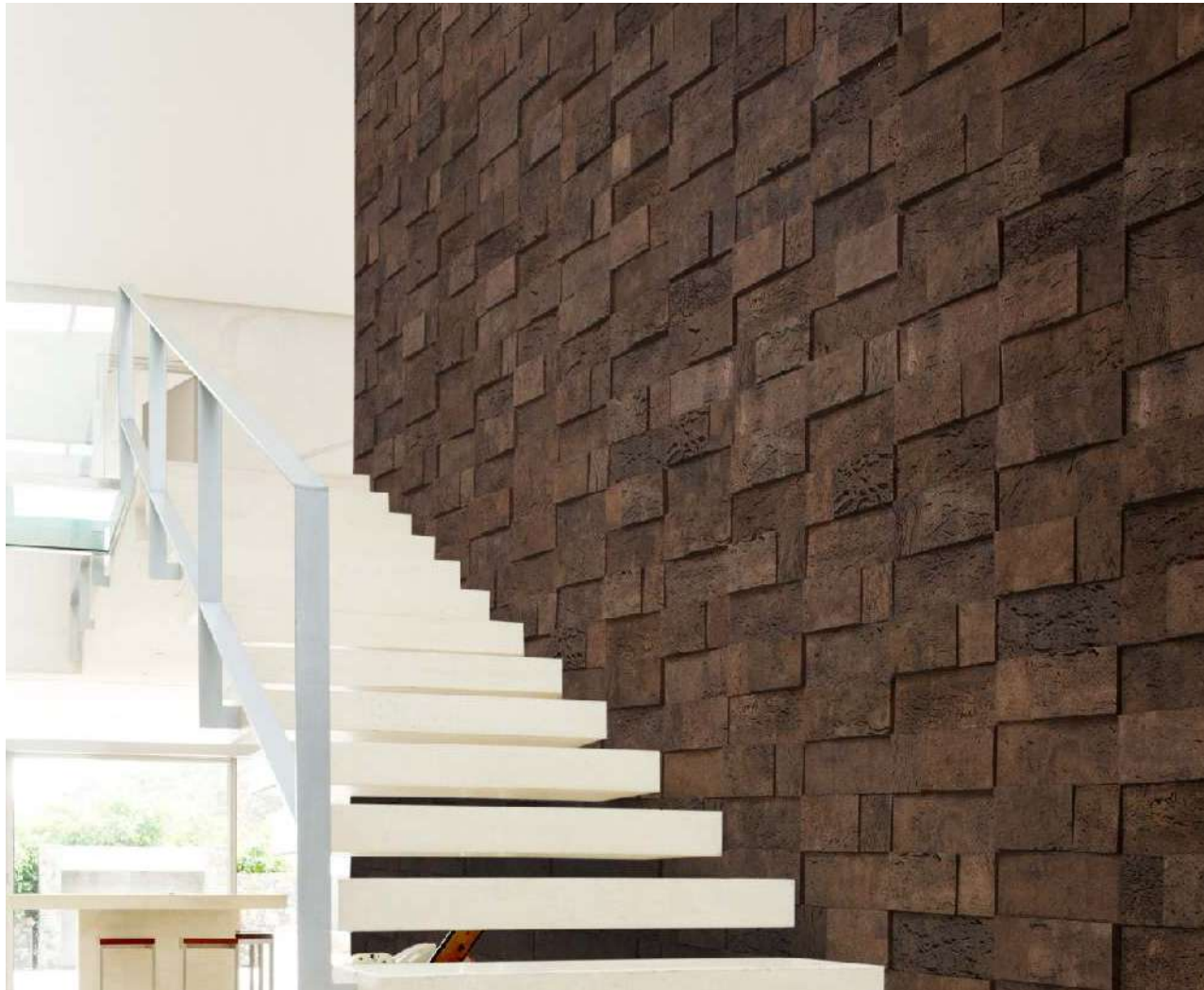
*Peak - White (painted)*



muratto®

# Cork Bricks

a textured and 3-dimensional wall finish made from natural cork bark, offering sound absorption, a tackable surface, and availability in multiple full-body 'immersion' color options. Available in 3D, Beveled, and Grand versions.



3D – Brown



Beveled – Natural

 tackable + resilient

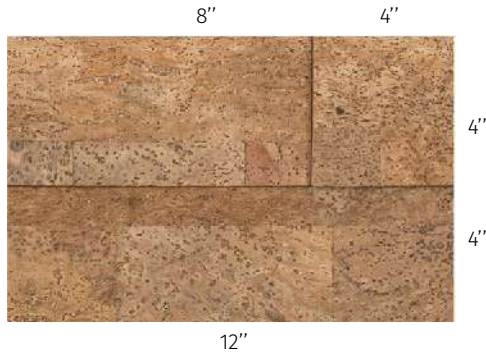


Grand – Multicolored

 effectively absorbs sound

# Cork Bricks

## 3D Version



## Beveled Version



NOTE: all inch measurements are approximate values based on metric conversions

### 3D Component Sizes:

- 300\*100\*7mm ~ (12" x 4" x 5/16")
- 200\*100\*11mm ~ (8" x 4" x 7/16")
- 100\*100\*14mm ~ (4" x 4" x 9/16")

### 3D Quantity per box:

27 pieces (9 of each size)  
5.81 sq. ft. / box

### 3D Installation:

Water-based contact cement

## Grand Version



### Beveled Size:

230\*70\*7mm ~ (9" x 2 3/4" x 5/16")

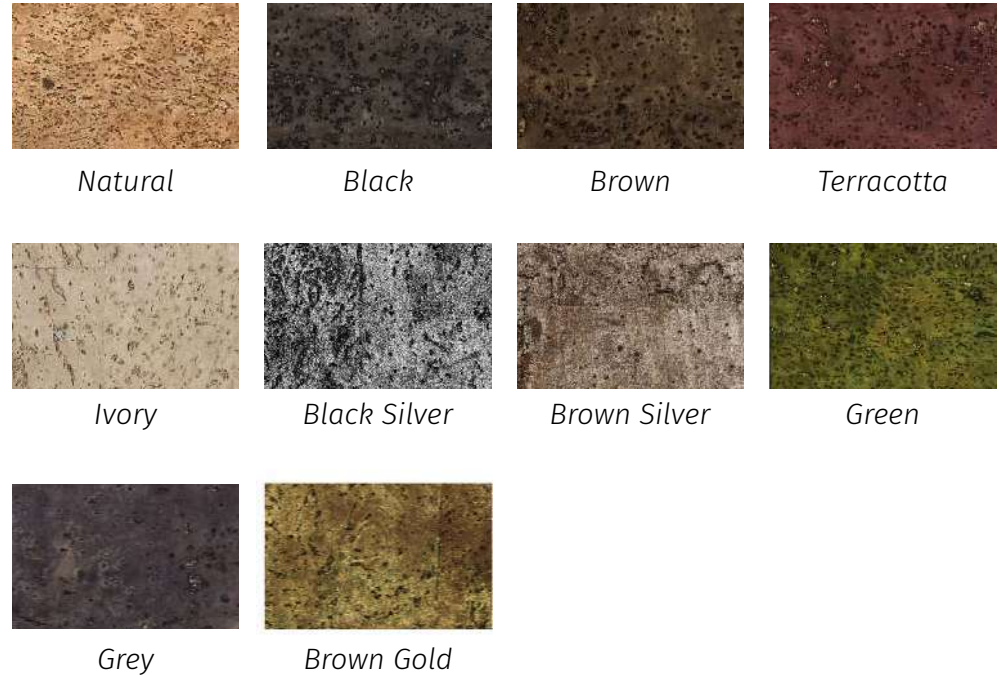
### Beveled Quantity per box:

62 pieces  
10.74 sq. ft. / box

### Beveled Installation:

Water-based contact cement or self-adhesive

## Color Options



### Grand Component Sizes:

- 300\*200\*4mm ~ (12" x 8" x 2/16")
- 200\*200\*7mm ~ (8" x 8" x 5/16")
- 200\*100\*11mm ~ (8" x 4" x 7/16")
- 100\*100\*14mm ~ (4" x 4" x 9/16")

### Grand Quantity per box:

32 pieces (8 of each size)  
11.19 sq. ft. / box

### 3D Installation:

Water-based contact cement

### Composition:

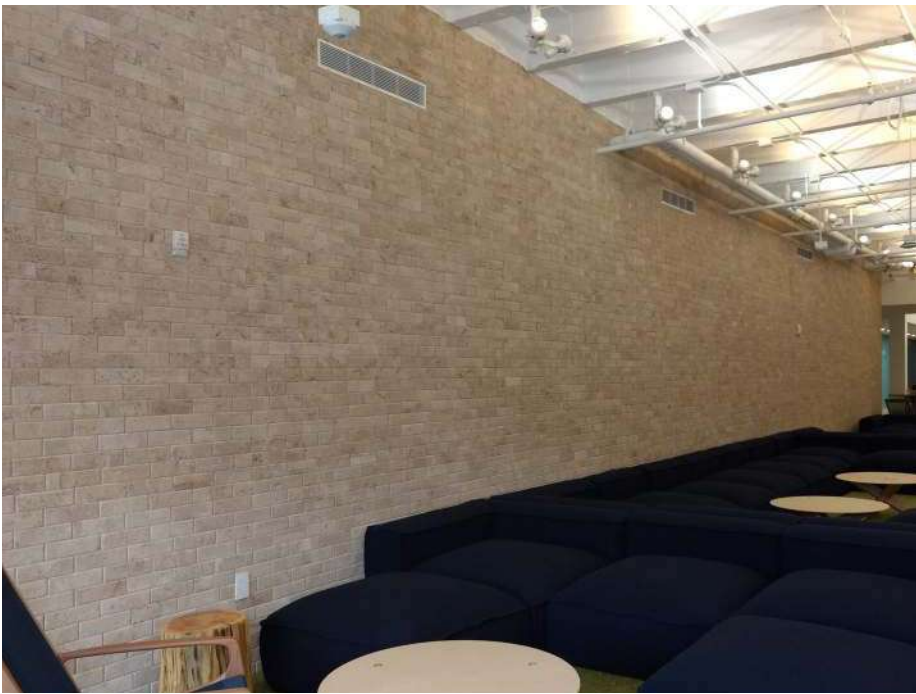
100% natural cork bark

### Noise Reduction Coefficient:

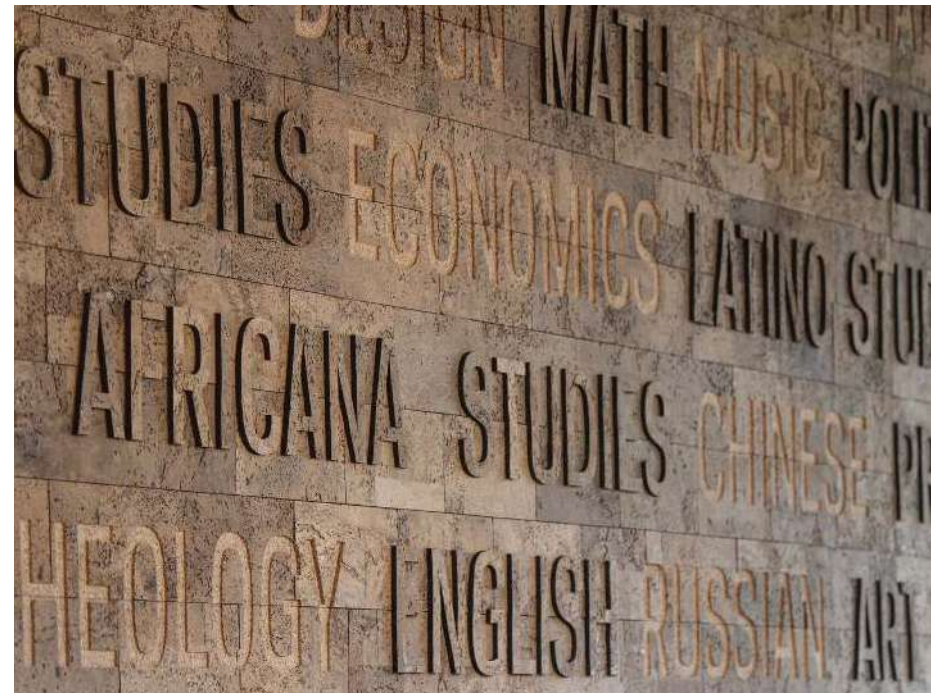
0.15 NRC (absorbs approx. 40% of sounds in the human voice frequency range)

### Colorization:

Water-based, anti-bacteria pigmentation achieved through 'immersion'



Beveled – Ivory



3D (via 'CNC') - Brown



3D – Natural



3D - Terracota

muratto®

# Cork Bark™ Panels

Muratto's **CORK BARK™ Panels** allow you to really enjoy the natural majestic beauty of the cork oak trees, but indoors. Our biophilic panels are made using different parts of the 'bark', each processed in different ways depending on the version, all of which incorporate small fragments of natural preserved moss throughout each panel. The panels are currently available in Virgin Tree and Trekking versions. The contrast created in each is striking, yet comforting and peaceful at the same time.



Cork Oak Trees



Outer Cork Bark (see VIRGIN TREE)



Flattened Inner Cork Bark (see TREKKING)

# VIRGIN TREE

## Cork Bark™

The **VIRGIN TREE Cork Bark** panel is made using the outer bark of the cork oak. It is rugged, textured, heavily mottled, and provides high contrast. Blended with the moss, one feels they are sitting in 'nature'.

**Panel Size:**

1480 \* 600 \*25mm

(approx. 58-1/4" x 23-5/8" x 1")



*Virgin Natural*



*Virgin Ivory*



*Virgin Green*



*Virgin Brown*



*Virgin Terracotta*



*Virgin Sandstone Black*



*Close-up of Virgin Tree (Natural) with moss*



*Virgin Tree (Natural) seating area*

# TREKKING

## Cork Bark™

The **TREKKING Cork Bark** panel is from the inner core of the cork bark that is compiled once the bark is 'steamed' and flattened, and then both the inner layer and rough outer layer are removed, leaving just the core material. These flattened core strips are stacked, and laminated, providing a very linear presentation, that undulates in depth ever so slightly, but in doing so provides a rhythmic texture.

**Panel Size:**

900 \* 300 \* 25-30 mm

(approx. 35-1/2" x 11-7/8" x 1-1.25")



*Close-up (at angle) of Trekking (Natural)*



*Trekking Natural*



*Trekking Ivory*



*Trekking Green*



*Trekking Brown*



*Trekking Terracota*



*Trekking Sandstone Black*



*Trekking (Sandstone Black)*

muratto®

# Primecork

a large format and extremely durable cork wall panel made with a proprietary dual-veneer surface lamination. Available in matte natural cork visuals (Classic), as well as metallic semi-gloss options (Premium) – either available in both standard or 'tackable' versions.



Classic – Taupe



Classic – Natural

 silky smooth visual appeal



Premium – Blue

 options to complement any decor

# Primecork

Classic

Premium



Natural



Leather



Green



Terracotta



Amber



Gold



Pink



Moonstone



Brown



Ivory



Champagne



Black



Sapphire



Serge



Black Gold



Black Silver



Dark Grey



Taupe



Deep Indigo



Blue



Brown Silver



Platinum



Standstone  
Black

**Standard Thickness:**

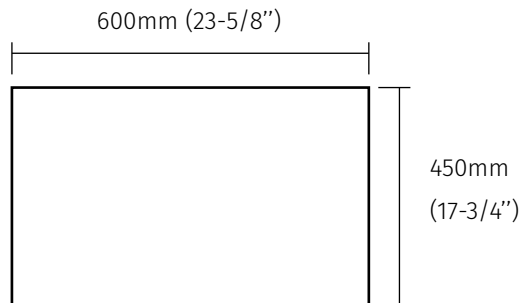
4mm (1/6")  
9mm (1/3") ✓ tackable

**Standard Size:**

600x450mm (23-5/8"x17-3/4")

**Composition:**

100% cork  
(dual layer cork veneer laminated onto a conglomerated cork base)



**Installation:**

Water-based contact cement (Wakol Loba D3540)

**Finish:**

Classic:  
natural protective coating  
(matte sheen level)  
Premium:  
metallic protective coating  
(semi-gloss sheen level)



**impermeable  
finish**

\*approx size in inches based on metric conversion



muratto®

# Concrete Overlay

is an environmentally friendly and sustainable collection which redefines the concrete 'concept'. Concrete Overlay panels are a thin veneer of natural cement on a natural, stable backer. Our panels are VOC-free, and contain NO toxins, chemicals, gypsum, or glass fibers.



Medium



Medium

 real concrete



Black

 saving carbon one concrete wall at a time

# Concrete Overlay



*Black*



*White*



*Medium*



*Medium*

## Features and benefits:

- Lightweight (approx. 1 lb./sq.ft.)
- Easy to handle and install.
- Extremely stable
- Class "A" for fire (ASTM E84)
- Contains NO Toxins and is VOC-free

**\*Note:** Contact us for Panel size options and packaging information.

## Composition:

Real concrete wear-layer on top of VOC-free, inert panel substrate

## Custom Options:

Custom sizes and different 'finishing techniques' are available upon request (inquire as to standard options)

## Installation:

Fast-setting unilateral construction adhesive

## Finish:

Material ships 'natural', though in high-traffic applications or when 'white' is used, a concrete or stone sealer is recommended (inquire for specific recommendations)



# Versacork®

**Versacork Concepts** evolved from the belief that sustainable product development revolves around using readily available material. It then embraced the features of that material to create an enduring product with a range of applications.

**VERSACORK®** is a tile mosaic made from rapidly renewable cork. The cork, harvested from the cork oak tree, is peeled from the trunk of the tree, leaving it to regrow naturally. Versacork is a 100% byproduct of the cork stopper industry. The cork mosaics are created by cutting the individual pieces to size and mounting them on a mesh backer, which defines the spacing. This adds to ease of installation. Cork in this unaltered state is only found in Versacork. It brings to the design world unique aesthetics, versatility, and intrinsic technical merit



## Cork – Nature’s Material

Cork is a unique material. Consisting of more than 200 million cells of air per cu.in., cork’s innate structure provides tremendous elasticity, enabling compression to half its size without loss of flexibility. A wine cork removed from a wine bottle is a good example of this. Cork is also impermeable to moisture. Think of how wine bottles can be stored on their sides for decades. The material’s compression and impermeability contribute to its excellent thermal and acoustic strengths.



## Versacork’s Technical Strength

Versacork has unmatched technical value when used in a flooring application:

- **Impermeability** – can be used in wet applications including showers
- **Elasticity + Slip Resistance** – provides softness underfoot with excellent slip resistance
- **Thermal insulation** – warm to the touch when walked upon
- **Acoustic insulation** – absorbs and dissipates sound transmission



## Versatility in Design

Versacork’s color is attractive in its natural state. And it can easily be stained using a commercial stain before installation. Versacork was originally designed as a flooring material. However, it is now used extensively in wall applications, to cover furniture/millwork components, and as decking for ocean faring yachts. Versacork is truly sustainable - offering many lifestyle benefits and values that other mosaic or flooring materials do not have.



Natural Cork Forest



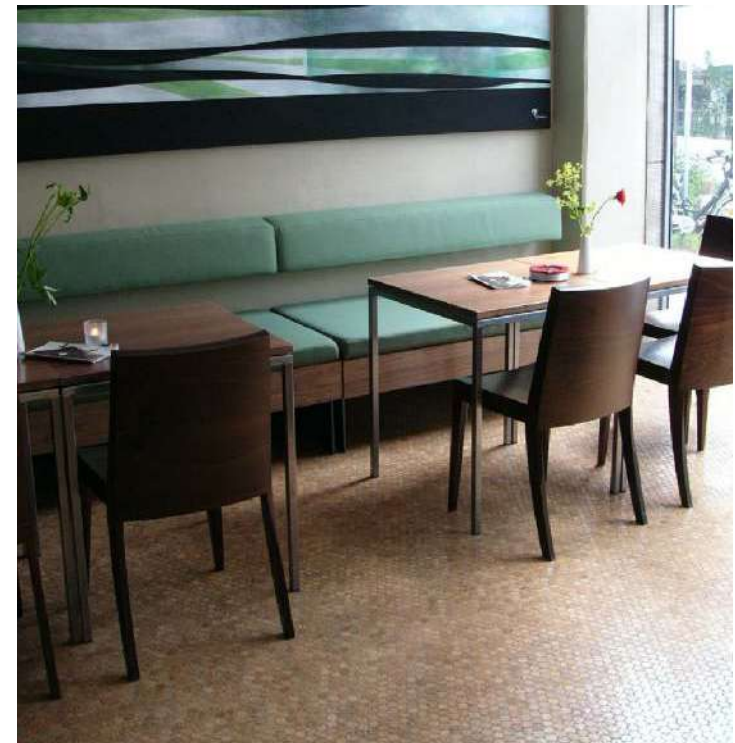
Making cork Stoppers



Wine corks

# Versacork®

a 'post-industrial', recycled cork mosaic tile sourced as 'by-product' from the wine bottling industry. Suitable for flooring and wall installations, Versacork provides unmatched design versatility with technical benefits no other tile can offer.

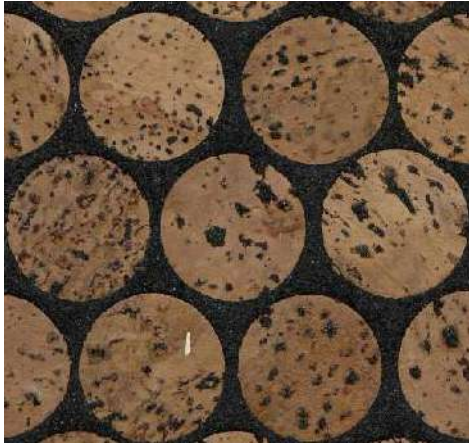


 wet and dry applications

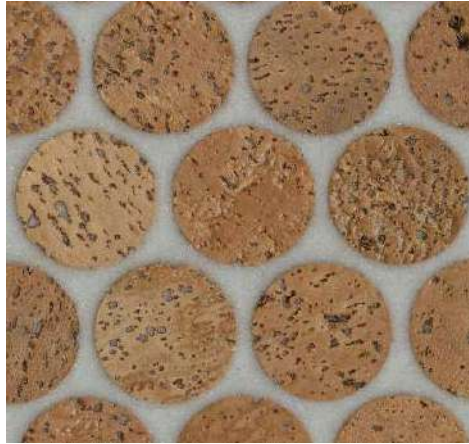


 thermal insulator  
(radiates body or room heat back)

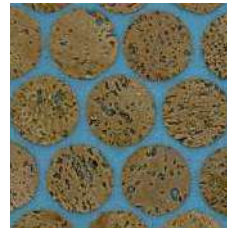
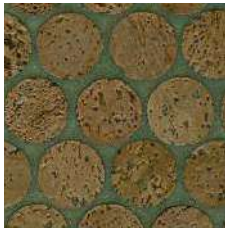
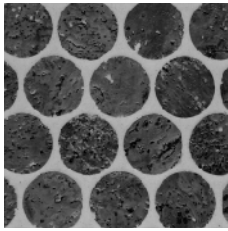
# Versacork®



Premium



MEGA



Variety of stain and grout options

## Size Options:

Premium

Discs: 1" diameter

Sheet size: ~ 1/4" x 1' x 2'

Mega

Discs: 1 3/8" diameter

Sheet size: ~ 1/4" x 2' x 2'

## Finishes and Construction:

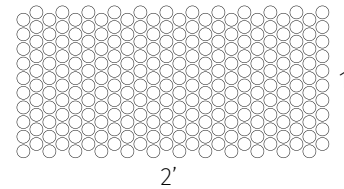
Prefinished:

- UV cured urethane
- Mesh backing

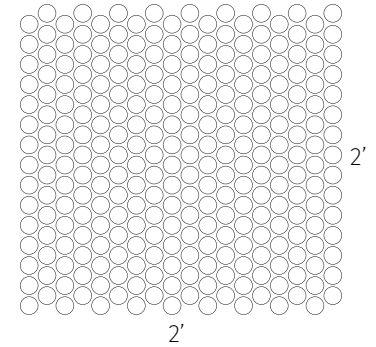
Unfinished:

- Stainable and sealable
- Plastic-faced for easy installation

Premium



MEGA



## Installation:

Grouted tile mosaic

## Coefficient of Friction:

Exceeds ADA standards for slip resistance

- Wet .879
- Dry 1.1

## Composition:

Solid 'post-industrial' recycled wine cork material

## Thermal Properties

(per ASTM C 518):

- Resistance (r) - 0.49



**TEXTURA®** is a brand of sustainable wood wall décor designed to create a rich looking aesthetic. Textura incorporates several main directives in its product development and design that include natural raw materials, dimensional design, and high quality, non-toxic components.



**Textura Recycled** is an interlocking wood wall panel. It is designed to highlight and embrace the natural beauty of real wood. The juxtaposition of varied thicknesses and sized slats contribute to a rich array of textures. Made from natural wood – some recycled and reclaimed – Textura Recycled is mounted on Baltic Birch plywood. The staggered edge and interlocking panels contribute to a seamless look, making installation straight forward. Available in three different heights, each with a different thickness, the Oak, Maple, Walnut and ‘mixed species’ choices effectively provide a varied palette of options. Textura Recycled brings an aesthetic of modern clean lines with an element of depth and texture to the forefront.



**Textura Fusion** planks are very durable, wide (and long length), real wood ‘planks’ that are engineered for hardness and stability, but also for quick and easy installation. Fusion planks are made of FSC-sourced material, and come in Oak, Ash, and Walnut species. Having a moisture stability of over 5x that of engineered plywood products, it is no wonder why Fusion planks can be used in high humidity applications without issue. If you seek ‘real wood’ on the wall, with the natural grain variations that milled lumber provides, you have found your product. (Please note: also available in matching ‘flooring’ planks)

**Textura GROOVE** panels are CNC milled profile panels cut from laminated and sustainable solid bamboo stock. The GROOVE panels provide long parallel runs of bamboo ridges that when installed result in a highly sophisticated and seamless, yet ‘grooved’, bamboo wall. Available in 3 different versions, each with a consistent though different topical profile/pattern, clean and sustainable bamboo lines are yours for the offering.



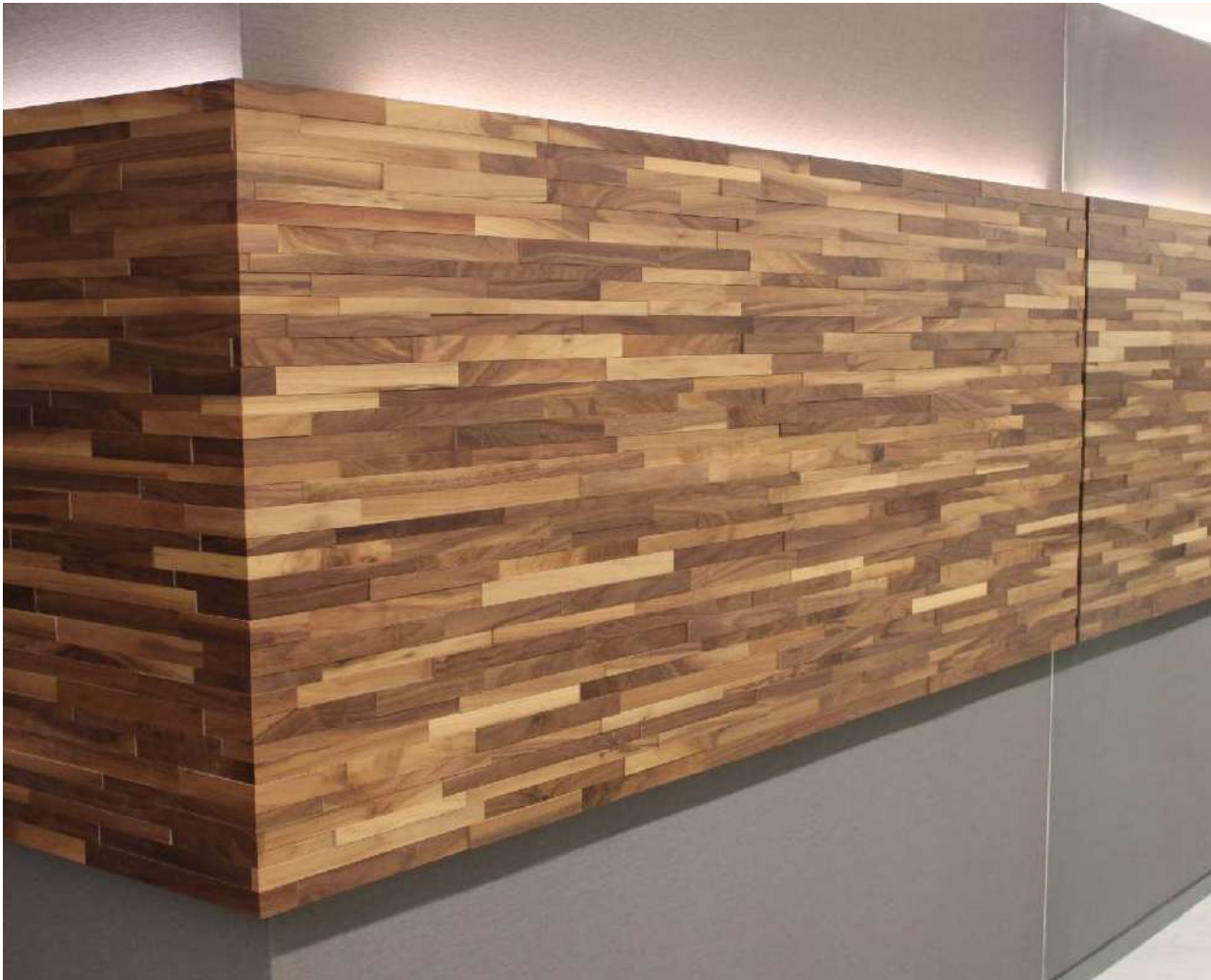
*Healthy forest canopy*



*Naturally growing and abundant ‘bamboo’ forest*

# Textura<sup>®</sup> Recycled

an interlocking wood wall panel that uses the beauty of natural wood to provide modern lines with an element of depth and texture. The staggered edge and interlocking panels make the seamless installation a breeze.



*Walnut*



*Jungle Light*

 variety of species and colors



*Cuban Oak*

 highly densified and stable

Textura®  
**Recycled**

Domestic Series

Textura®  
**Recycled**

Jungle Series



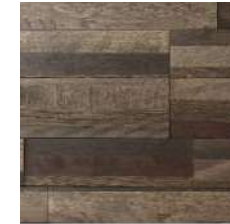
Walnut



Cuban Oak



Jungle  
Light



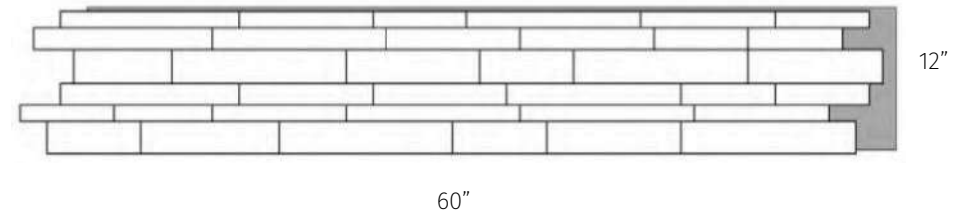
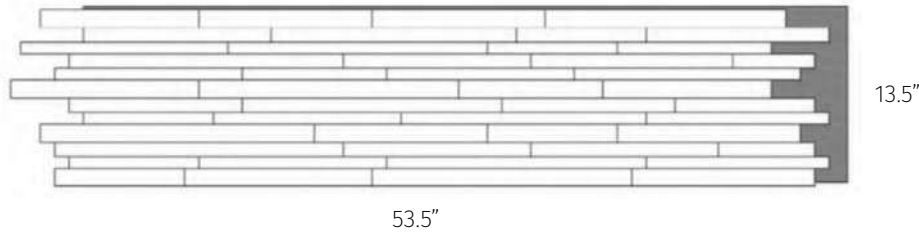
Jungle  
Dark



Mossy  
Maple



Jungle  
Medium



**Domestic Size:**

13.5" x 53.5" x ~3/8"

25 sq. ft / box (5 panels)

**Finish:** ●

UV-cured urethane

**Jungle Size:**

12" x 60" x ~1/2"

25 sq. ft / box (5 panels)

**Finish:** ■

100% Natural Oil

**Composition and Construction:**

Wood strips laminated onto Baltic Birch ply-core

**Installation:**

Construction adhesive

**Fire-rating:**

Available as Class "A" (per ASTM E84)

**Accessories:**

Contour moldings

**Customization:**

Other select species and colors based on certain minimums



# Textura® Fusion

An extremely densified, stable, and easy to install real wood plank made via a proprietary 'fusion' manufacturing method that melts the wood top layer to the core. Available in 2 widths, with differing set lengths, you have 10 style options in Oak, Ash, and Walnut. The beauty of real wood and its' clean 'grain' has never been so attainable for wall installations.



Walnut Natural



Oak Latte

 wide planks + long lengths



Easy installation

 Proprietary clips for simple and fast installation

Textura®  
**Fusion**



*Oak Natural*



*Chestnut Oak*



*Tobacco Oak*



*Country Ash*



*Field Ash*



*Light Weather*



*Oak Latte*



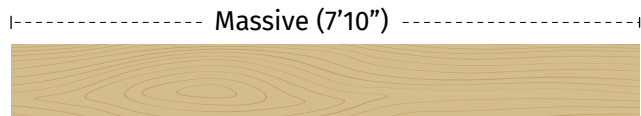
*Natural Walnut*



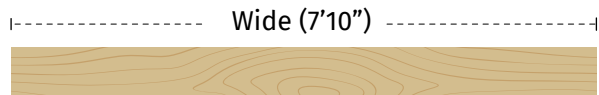
*Medium Weather*



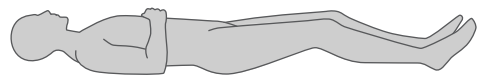
*Smoked Walnut*



Massive (7'10")



Wide (7'10")



Human (5'9" for scale)

**Sizes:**

**Massive:**  
 10-1/2" x 94"

**Wide:**  
 8-1/4" x 87"

(\* Note: Walnut species only available in the 'Wide' size)

**Installation:**

FSC- certified 'real wood' engineered composite

**Finish:**

UV cured acrylic

**Fire Rating:**

Bf1-S1

**Composition:**

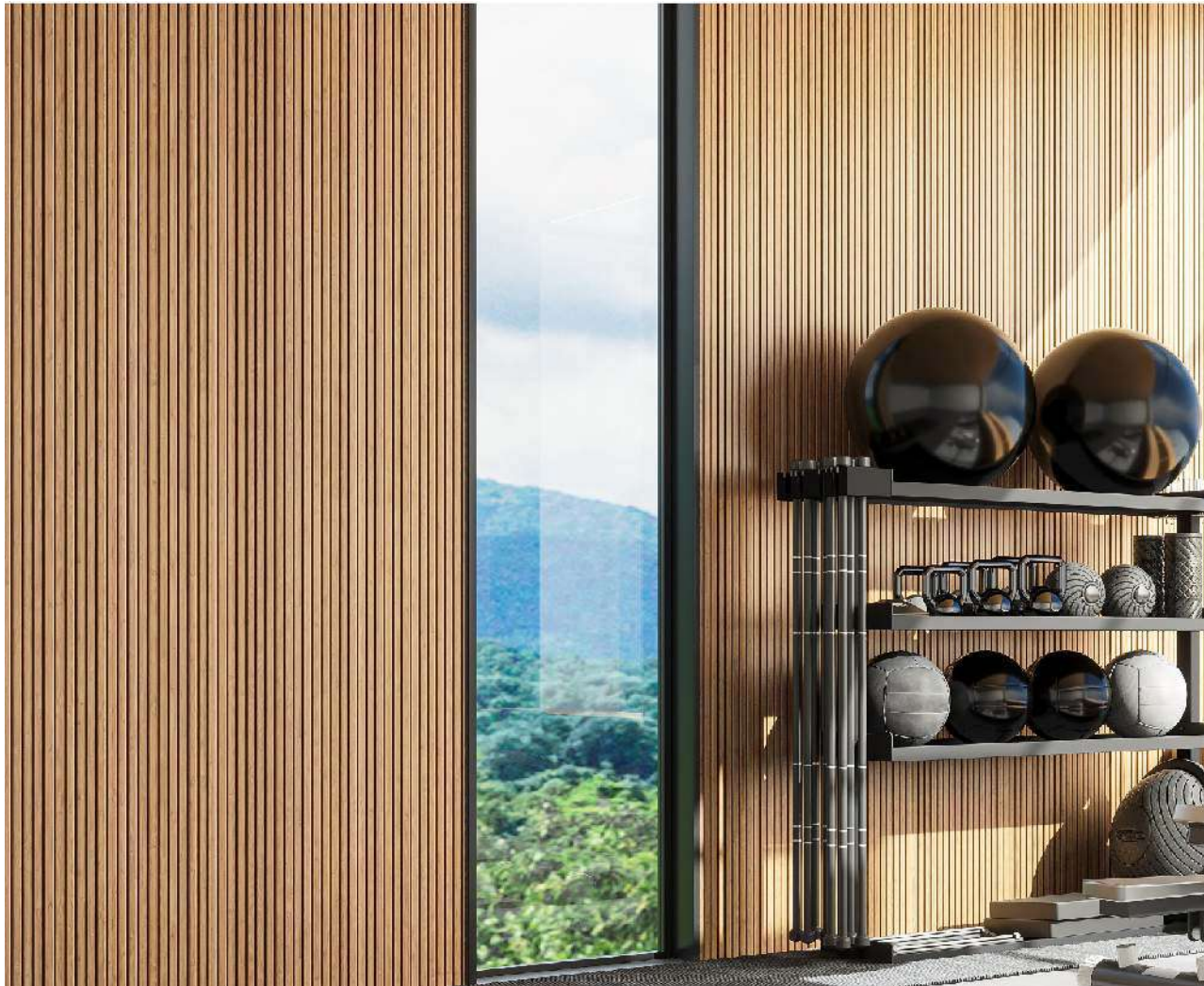
FSC- certified 'real wood' engineered composite

**Customization:**

has matching 'commercial' durability flooring

# Textura® GROOVE

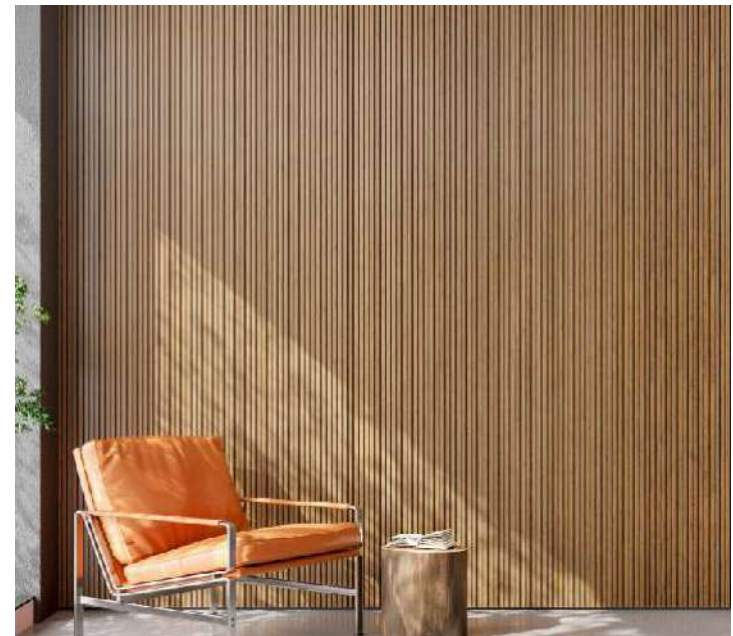
The GROOVE panels provide long parallel runs of bamboo ridges that are milled into an engineered, yet solid bamboo substrate. Available in 3 different profiles, and 9 colors, your seamless 'grooved' bamboo wall is literally a pin nail away from reality.



*Ribs – Medium*



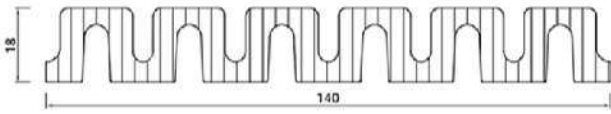
*Plateau – Hazelnut and Black*



*Plateau – Light*

# GROOVE

## Ribs



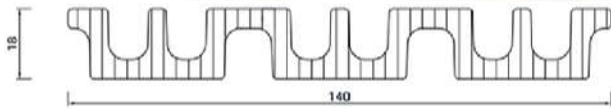
**Ridge width:**

~2/3"

**'Groove' width:**

~1/3"

## Mesa



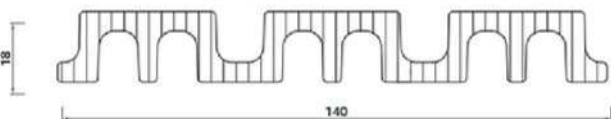
**Ridge widths:**

"3/16", "13/16"

**'Groove' width:**

"3/8"

## Plateau



**Ridge width:**

"1-3/8"

**'Groove' width:**

"7/16"

## Colors



Light



Medium



Dark



Black



Grey



White



Walnut



Hazelnut



Teak

### Dimension:

Panel Thickness: 3/4"

Panel Length: 8' (\*Customizable up to: 19')

Panel With: 5-1/2" (per piece)

### Composition:

Bamboo – 100% bamboo

### Customizations:

"FSC-certified" material available

### Fire-rating:

Available as Class "A" (per ASTM E84-17)

### Finish:

All colors available either in a UV Lacquer ('satin' sheen) or 'rubbed' Oil (matte' sheen)

### Installation:

Pin nail, adhesive, or 'Z' clip



*Ribs - Dark*



*Ribs - Medium*



*Plateau - Hazelnut*



*Ribs - Medium*



**SUSTAINABLE**  
MATERIALS

info@SustainableMaterials.com

www.SustainableMaterials.com

720-449-3063

Thank you for your interest in Sustainable Materials.

Please also visit our partner companies and product lines:

**Décor Acoustics** – specializing in ‘acoustic’ products

([www.DecorAcoustics.com](http://www.DecorAcoustics.com))

CoreBOO™ - bamboo acoustic panels, planks, and slat walls

WAVE™ Panels – moulded ‘wave’ panels from recycled PET felt

Acoustifoam™ - closed-cell foam ceiling panels, baffles, and tiles

**Sustainable Flooring** – specializing in ‘sustainable’ commercial flooring

([www.SustainableFlooring.com](http://www.SustainableFlooring.com))

Densacore™ – bamboo on mineral substrate

ComCORK™ – commercially viable cork flooring

Hightech™ Woods flooring – super-densified, wide-plank, engineered flooring