

# Strandwoven™ TIMBER FLOORING



**Plank Size:** 5-1/2" x 48" x 1/2"

**Finish:** UV-cured acrylic commercial-grade urethane

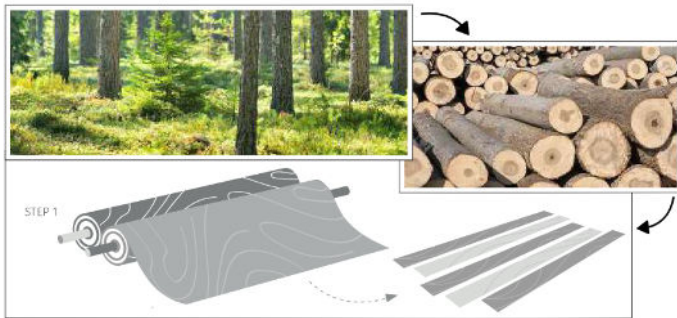


**Plank Size:** 3-7/8" x 72" x 9/16"

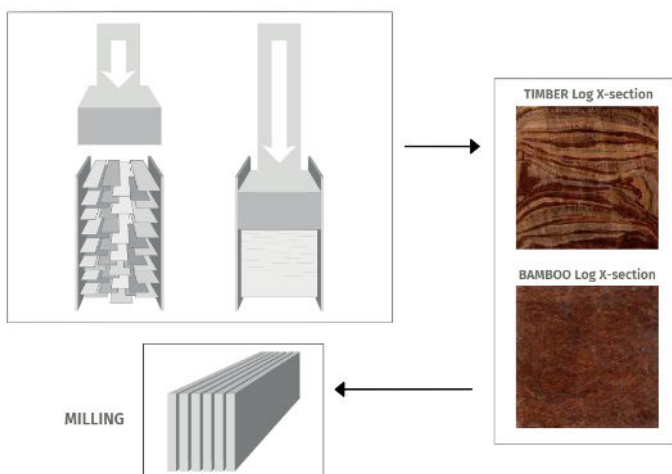
**Finish:** available only in Unfinished



## TIMBER-PROCESSING



## COMPRESSION



## Product Overview

**Strandwoven™ TIMBER** is a densified composite wood flooring plank made via the compression of wood veneers. Touting over 3x the hardness and stability of commonly used 'Oak' hardwood flooring, Strandwoven takes by-product wood and turns it into a product with attributes that are better than what nature provided naturally. Available in three color options, if you seek a natural wood floor, that tops the charts in durability, dent-resistance and stability, you have found your sustainable match.

## Specifications

**Description:** A densified composite wood flooring plank made via the compression of wood veneers.

**Size:** There are two plank sizes  
Wide: 5-1/2" x 48" x 1/2" (Available in both finishes)  
Thin: 3-7/8" x 72" x 9/16" (Only available in Unfinished)

**Colors:** Natural, Sunburst, Mocha, Flatirons

**Finish:**

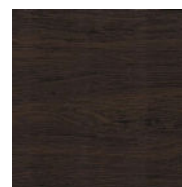
- **Pre-finished with Commercial 'water-based' urethane** – Micro Beveled edge
- **Unfinished** – Square-edged

**Composition:** 100% Real Wood – Made through a proprietary process and "recipe-method" of compressing by-product wood veneers into a densified log.

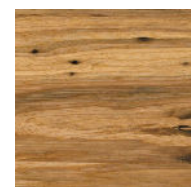
**Fire-Rating:** Class "A" for fire (per ASTM E84 – tested in accordance for vertical/'wall' applications)

**Installation :** Nail or glue-down

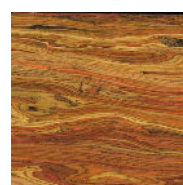
## Colors



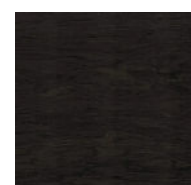
Mocha



Natural



Sunburst



Flatirons



## Sustainable Attributes

Made from 'by-product' wood veneers. This is a circular economy resource – material sourced as waste from other operations.

## Environmental Certification

- EPA TSCA Title VI
- CA High Performance Schools EQ 2.2.3 (achieves standard)
- Carb Phase 2 ( $\leq 0.5$ ppm) compliant
- NAUF (No added Urea Formaldehyde)
- LEED compliant:
  - MR6 – Rapidly Renewable
  - MR4 – Low-emitting Materials

## Product Testing Specifications

- Class "A" for fire (per ASTM E84 – tested in accordance for vertical/'wall' applications)
- Extremely hard (4950 psi Janka rating; over 3.5x the hardness of Oak hardwood flooring)

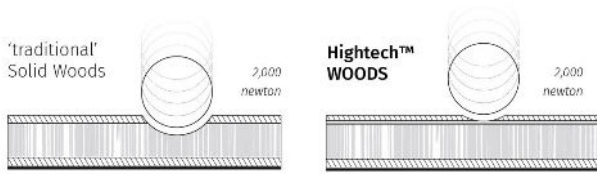
GET IN TOUCH

+1 720.449.3063

[info@sustainablematerials.com](mailto:info@sustainablematerials.com)



## Dent Resistance and Stability

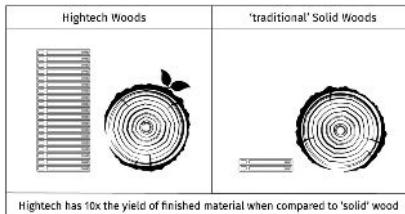


Strandwoven TIMBER™ provides outstanding dent resistance and dimensional stability due to its ultra-dense construction.

With a Janka hardness rating greater than 2875 psi (ASTM D 1037), it delivers more impact strength than many traditional hardwoods.

This high level of performance means fewer dents, longer floor life, and reduced maintenance over time.

## Sustainability

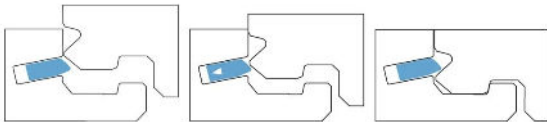


Strandwoven TIMBER™ is manufactured with sustainability at its core.

It is made from 100% post-industrial reclaimed wood fibers, reducing waste while maximizing durability.

The production process uses low-VOC, EI-compliant adhesives and finishes and contains no added urea formaldehyde, helping ensure healthier indoor air quality.

## Ease of Installation



### Speed of installation:

- Can be installed by nailing, stapling, or gluing
- Cleats are recommended for easier handling of the dense material (e.g., Powernail®)
- Flooring should be acclimated for a minimum of 10 days prior to installation

### Ability to create a 'sound' finished surface

- Dense structure supports long-term performance and strong adhesion
- Works effectively with premium urethane wood floor adhesives

### Use flexibility

- Supported with a full system of accessories, including stair treads, risers, nosings, baseboards, reducers, and T-molds for a complete finish

GET IN TOUCH

+1 720.449.3063

info@sustainablematerials.com

